

Universitat Autònoma

UAB

Universitat Autònoma
de Barcelona

Mobility management at the Universitat Autònoma de Barcelona

Rafael Requena

Unitat de Gestió de la Mobilitat UAB

Àrea de Serveis logístics i Administració. Direcció d'Arquitectura i Logística

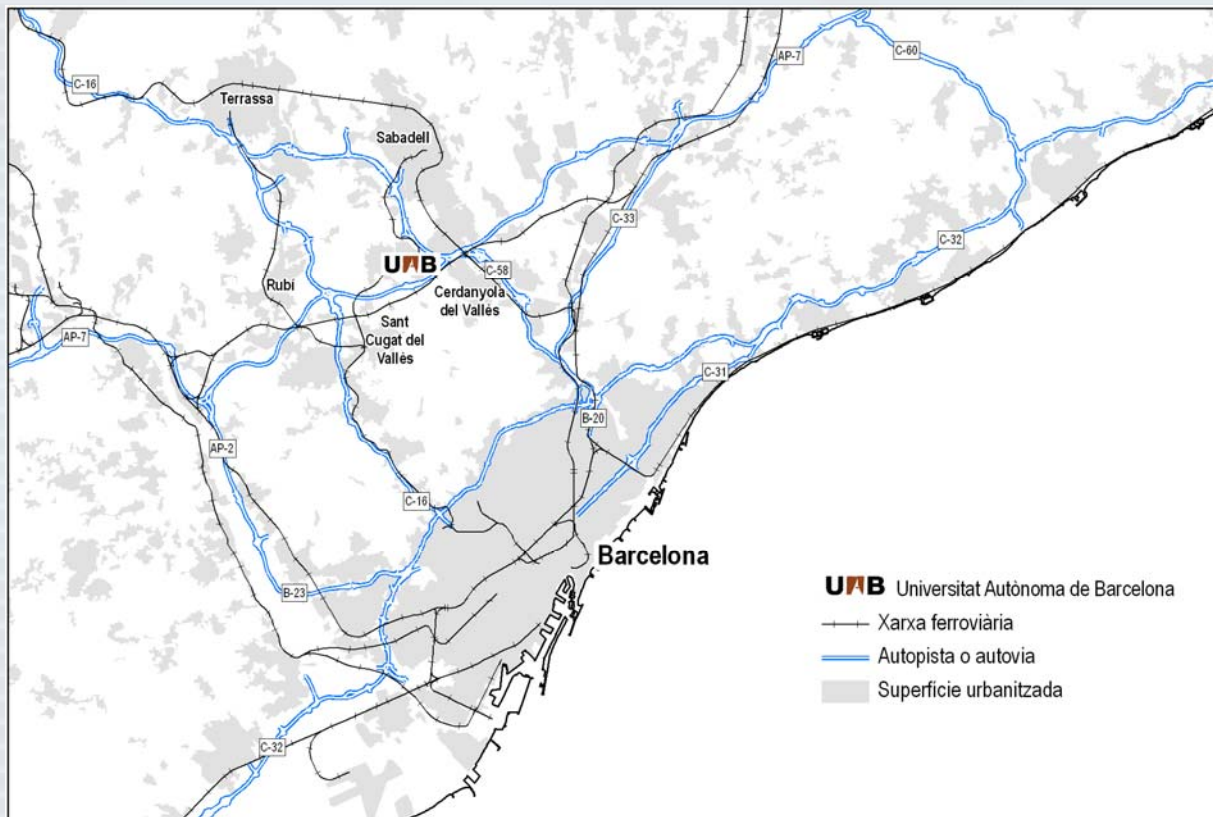
rafael.requena@uab.cat

(34) 93 581 46 43

Mobility management at the Universitat Autònoma de Barcelona: an innovative approach to accessibility and sustainability



Diagnosis



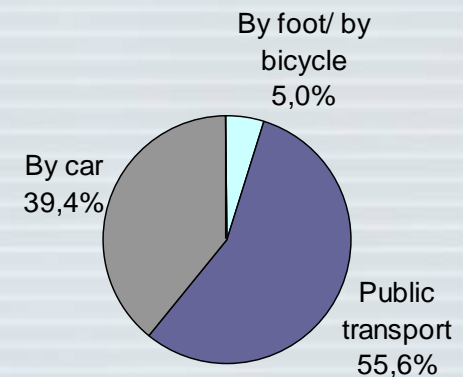
- Population: 45.000 people
- 220.000 trips per day
- Peripheral and suburban environment
- Surrounded by infrastructures of transport
- Constant growth

Diagnosis

- **Accessibility and competitiveness:** The competitiveness of the UAB to other universities partly depends on the possibility to access at the UAB

- **Sustainability**

- **Equity**



Mobility Law of Catalunya

Need of a planning policy and mobility management

Mobility planning and management at the UAB

2005: Creation of the Mobility Management Unit (MMU).

- Objective: To maximize the accessibility to the campus under parameters of efficiency, sustainability, safety and equity
- Team: A mobility manager and a mobility technician
- Budget: 50.000 € per year
- Functions: To assess the university government board on mobility policies, to diagnose the accessibility, to elaborate mobility proposals...

2006: Strategic plan of accessibility:

- The plan establishes the mobility model at the UAB and its strategic lines

2008: PMUAB.

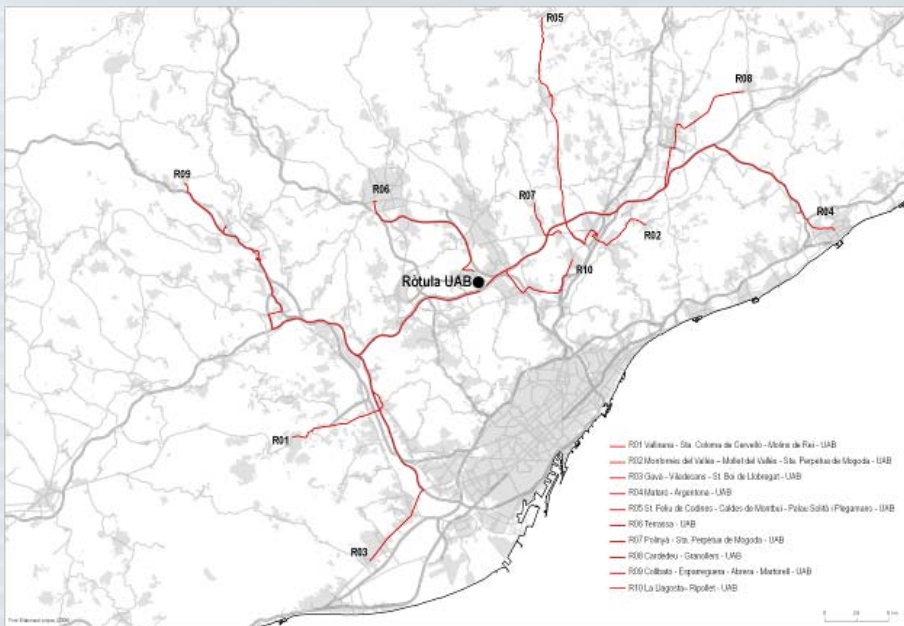
- The aim of the PMUAB is to become a tool to develop the strategic plan of accessibility, with concrete measures, budget and schedule
- Promoters: Generalitat de Catalunya, Autoritat del Transport Metropolità
- Participation of stakeholders in the development of the transport strategy

PMUAB strategic lines and measures

LE1 To manage the mobility generated by the UAB

LE2 To promote public transport

The hub: 10 new lines, increasing accessibility from nearby territories



Strategic lines and measures of the PMUAB

LE3

To promote trips on foot

LE4

To reach the universal accessibility to UAB



PMUAB strategic lines and measures

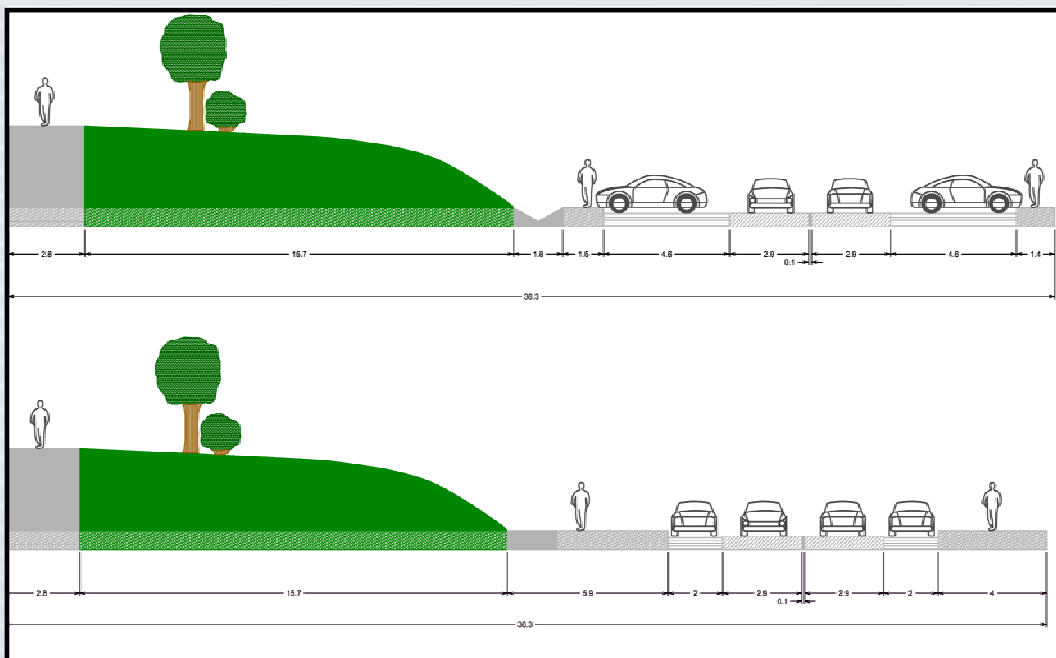
LE5

To promote trips by bicycle



PMUAB strategic lines and measures

LE6 To promote a more rational use of the private vehicle



PMUAB strategic lines and measures

LE7

To involve the university community



LE8

To promote the university community participation in mobility

LE9

To connect mobility and urbanism

The mobility observatory

A database with more than 100 indicators on:

- Offer
- Demand
- Infrastructures
- Environmental impacts

periodically updated



Observatori de la Mobilitat

Id	Número		
	1 1.1		
Nom			
Població: comunitat universitària per sector			
Descripció			
Persones que formen part de la comunitat universitària (Estudiants, PAS, PDI)			
Unitats	Font	Any de referència	Periodicitat
Habitants	UAB	2006	Anual
Valor			
37911			



Universitat Autònoma de Barcelona

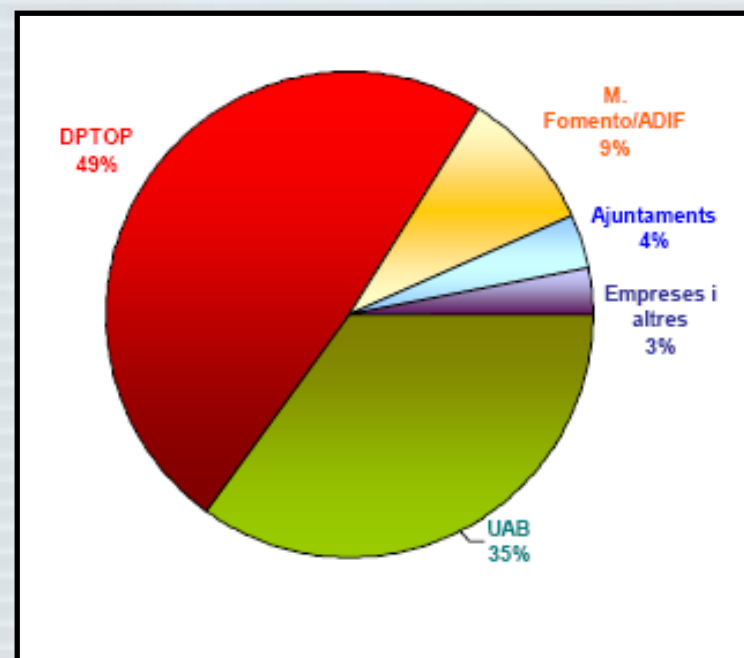
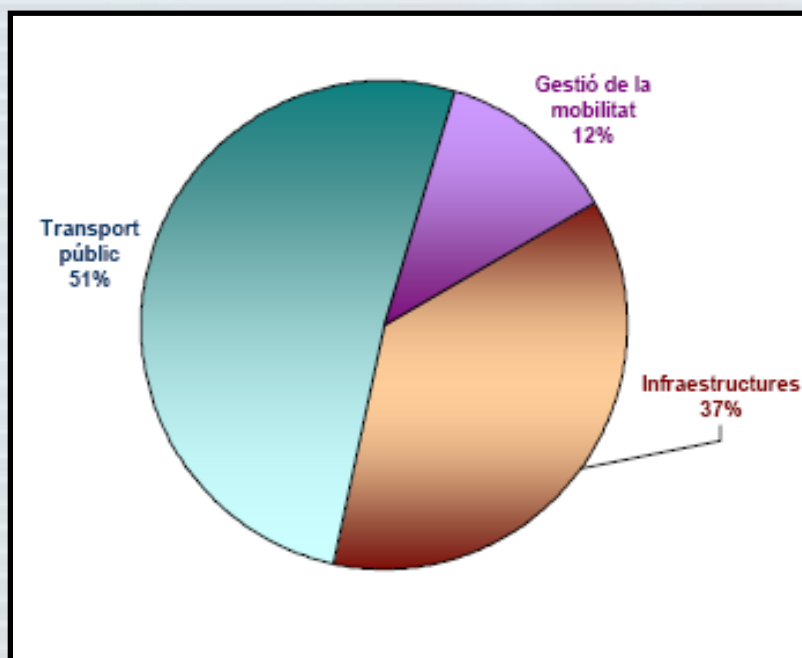
UNITAT DE GESTIÓ DE LA MOBILITAT

Àrea de Serveis Logístics i d'Administració

Schedule and budget

Temporary scope: from 2008 to 2014

Estimated budget: 22 M€



Further information:

<http://www.uab.es/servlet/Satellite/viure/pla-de-mobilitat-de-la-uab-1228891946120.html>

Universitat Autònoma

UAB

Universitat Autònoma
de Barcelona

Mobility management at the Universitat Autònoma de Barcelona

Rafael Requena

Unitat de Gestió de la Mobilitat UAB

Àrea de Serveis logístics i Administració. Direcció d'Arquitectura i Logística

rafael.requena@uab.cat

(34) 93 581 46 43